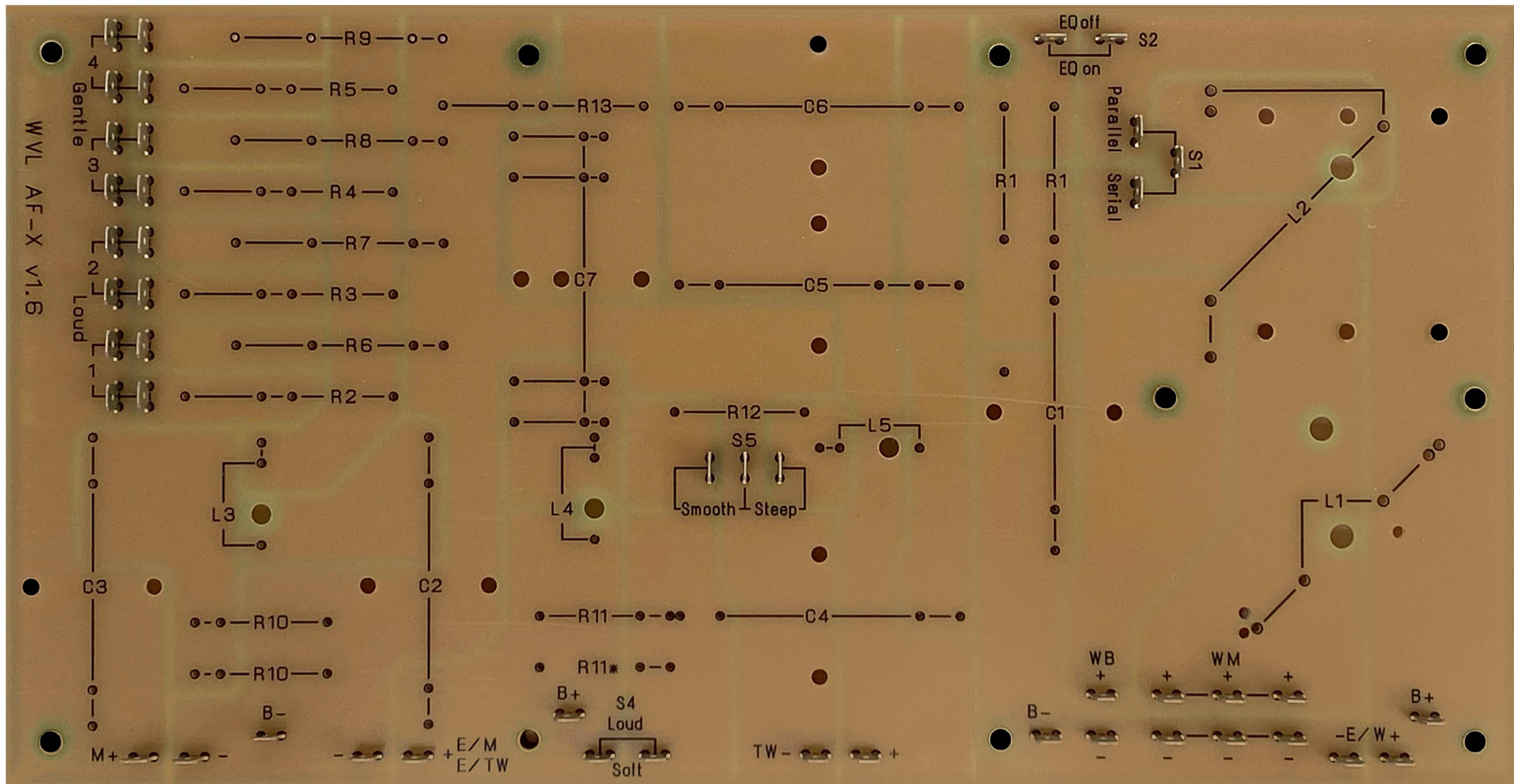


S1. woofer connection mode. From S1 to Parallel = woofers parallel, louder. From S1 to Serial = woofers serial, more deep bass

EQ. optional when bi-amping and long bridges
 B+ / B- are completely disconnected only
 (leave short bridge off in standard operation)
 This is for impedance compensation of woofers
 and not necessary if mid/high range is connected
 by long bridges B+ / B-

Level adjustment midrange
 Move both red/black bridges
 always together (either pos 1; 2; 3; 4)



To midrange

From base
 Left term's from rear

To tweeter
 through mid cab /
 through hole in top lid

To woofer
 bass (lower)

To woofer
 mid (upper)
 use one +/-

From base
 right term's from rear

S4. Bridge for loudest
 level of tweeter

S5. Does not have too much effect
 Should only be tried when everything
 else is perfect already