

WVL AD-2544

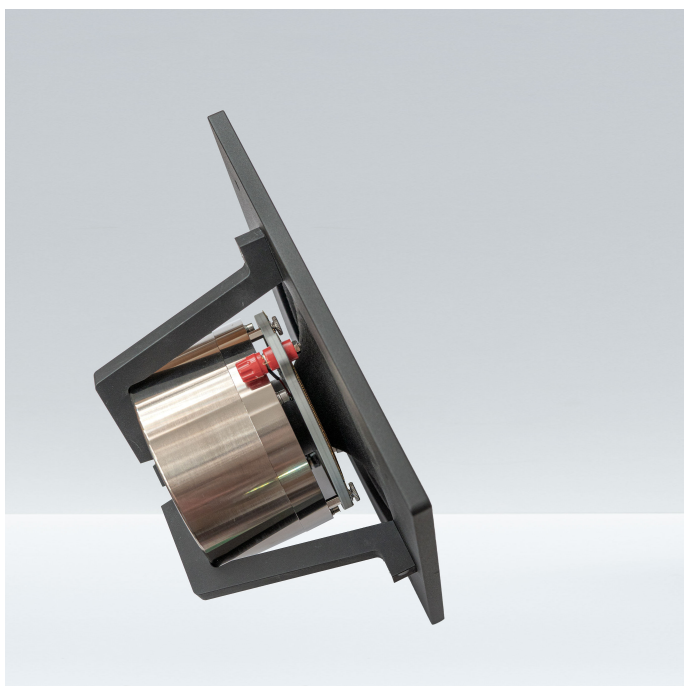
UHQ Field-Coil-Compression-Drive

Dimensions: The magnet construction measures $\varnothing 135\text{mm}$. The terminals protrude the diameter for approximately 22mm. All standard mounting circle bolts can be used with M4 screws. There are 4 at $\varnothing 101.6\text{mm}$, 4 at $\varnothing 82.5\text{mm}$, 2 at $\varnothing 76.2\text{mm}$, 3 at $\varnothing 57.2\text{mm}$. 1" and 1.4" exit is available.

WVL AD-5110

UHQ Field-Coil-Compression-Drive

Dimensions: The magnet construction measures $\varnothing 168\text{mm}$. The terminals protrude the diameter for approximately 22mm. The standard mounting circle bolts can be used with M6 screws. There are 8 at $\varnothing 101.6\text{mm}$. 2" exit is available.



WVL AC-1650

UHQ Field-Coil-Midrange-Drive

Dimensions: The square frame measures 260mm x 260mm. The AC-1650 has a 10mm thick front. We recommend mounting from the front with M5 screws. The housing circle cutout is $\varnothing 200\text{mm}$ and has 3 extensions measuring 25x25mm at 120degree angles. The cone diameter is $\varnothing 160\text{mm}$.

WVL AC-1638

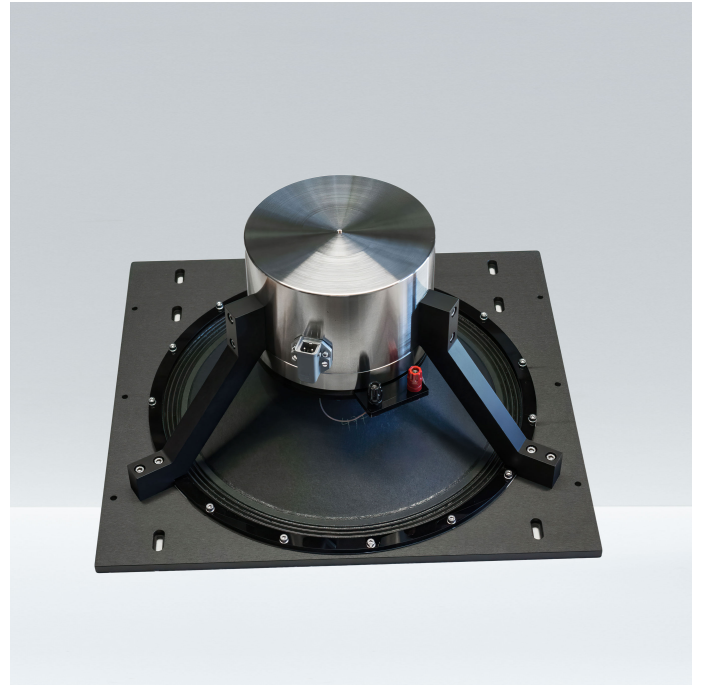
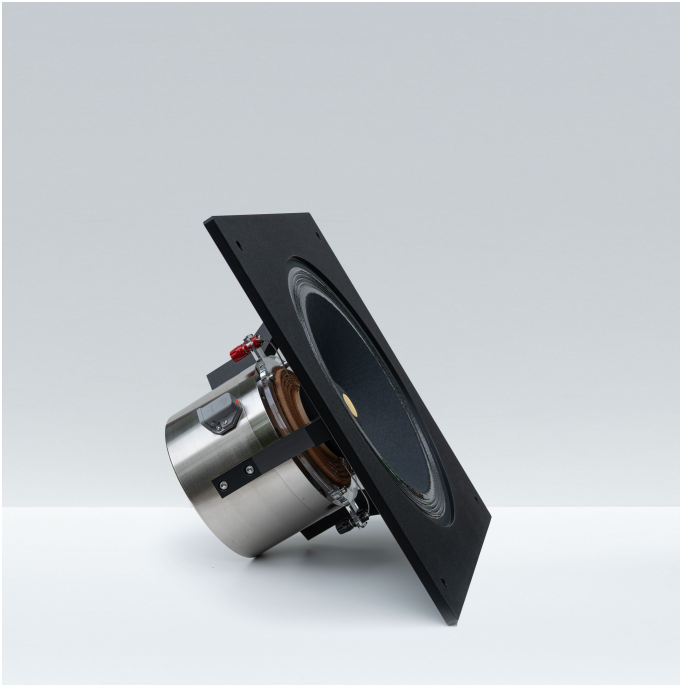
UHQ Field-Coil-Fullrange-Drive

Dimensions: Outmost diameter of the frame is approximately 230mm as neither the frame is exactly round nor the mounting holes are on a circle. M5 mountings screws are recommended. The depth of the unit including the Field-Coil connector at the rear is approximately 185mm. The cone diameter is $\varnothing 160\text{mm}$.

Available through:

Christine von Langa - Rödlas 54 - 91077 Neunkirchen a.Br. - Germany

<https://wolfvonlanga.de> - info@wolfvonlanga.com



WVL AC-2676

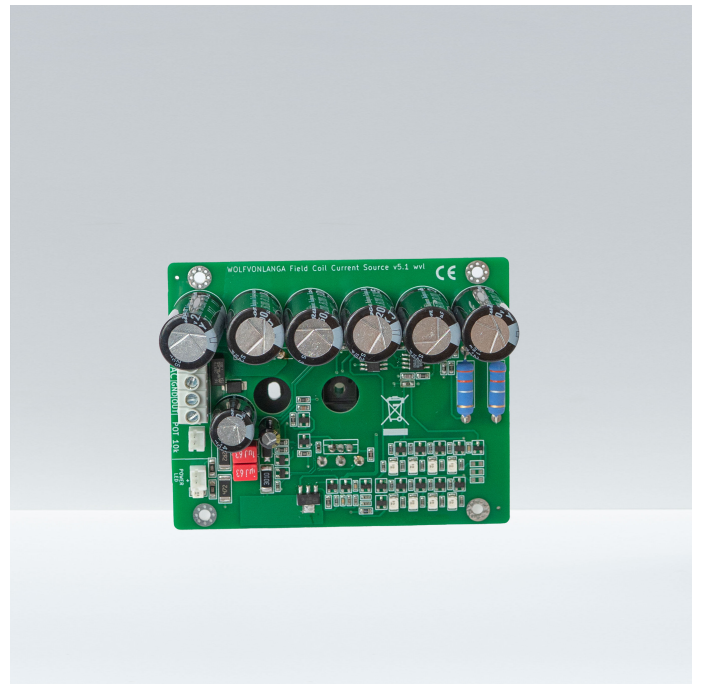
UHQ Field-Coil-Bass-Midrange-Drive

Dimensions: The square frame measures 400mm x 400mm. The AC-2676 has a 10mm thick front. We recommend mounting from the front with M5 screws. The housing circle cutout is $\varnothing 321$ mm and has 3 extensions measuring 28x31mm at 120degree angles. The cone diameter is $\varnothing 260$ mm.

WVL AC-3276Q

UHQ Field-Coil-Bass-Midrange-Drive

Dimensions: The square frame measures 446mm x 416mm. The AC-3276Q has a 10mm thick front. We recommend mounting from the front with M5 screws. The housing circle cutout is $\varnothing 392$ mm and has 3 extensions measuring 28x31mm at 120degree angles. The cone diameter is $\varnothing 320$ mm.



WVL AC-3276R

UHQ Field-Coil-Bass-Midrange-Drive

Dimensions: The frame diameter is $\varnothing 422$ mm. The AC-3276R has a 10mm thick frame. We recommend mounting from the front with M5 screws. The housing circle cutout is $\varnothing 374$ mm and has 3 extensions measuring 28x15mm at 120degree angles. The cone diameter is $\varnothing 320$ mm.

WVL FCCS-5.1

UHQ Field-Coil-Current-Source

Dimensions: The PCB measures 100mm x 80mm. There is need of AC input between 20V ... 36V for a DC output ≤ 50 V. The current can be adjusted with a potentiometer between 1.4 ... 4A. We recommend cooling fins of at least 0.9K/W or better. This current source can handle several field-coils in series.

Available through:

Christine von Langa - Rödlas 54 - 91077 Neunkirchen a.Br. - Germany

<https://wolfvonlanga.de> - info@wolfvonlanga.com