



WVL AD-2544

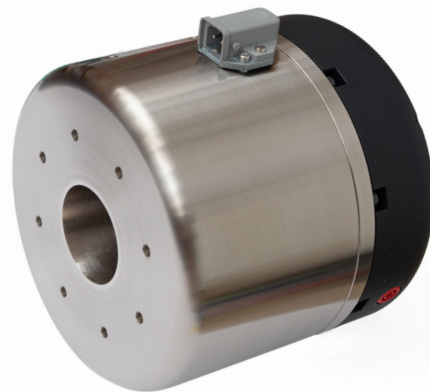
Field-Coil-High-Frequency-Drive

Recommended frequency range 500 to 20000Hz

Power Capability about 50 watts after 12dB crossover

Field-Dissipation up to 30 watts

1" metal adaptor/waveguide recommended



WVL AD-5110

Field-Coil-High-Frequency-Drive

Recommended frequency range 400 to 16000Hz

Power Capability about 100 watts after 12dB crossover

Field-Dissipation up to 35 watts

2" metal adaptor/waveguide recommended



WVL AC-1750

Field-Coil-Midrange-Drive

Recommended frequency range 90 to 4000Hz

Power Capability about 100 watts

Field-Dissipation up to 30 watts

Square Frame dimensions 260 x 260mm



WVL AC-1638

Field-Coil-Fullrange-Drive

Recommended frequency range 80Hz and above

Power Capability about 50 watts

Field-Dissipation up to 40 watts

Compatible with AUDIO FRAME LONDON



WVL AC-2676

Field-Coil-Bass-Midrange-Drive

Recommended frequency range 20 to 3500Hz

Power Capability about 150 watts

Field-Dissipation up to 35 watts

Square Frame dimensions 400 x 400mm



WVL AC-1738

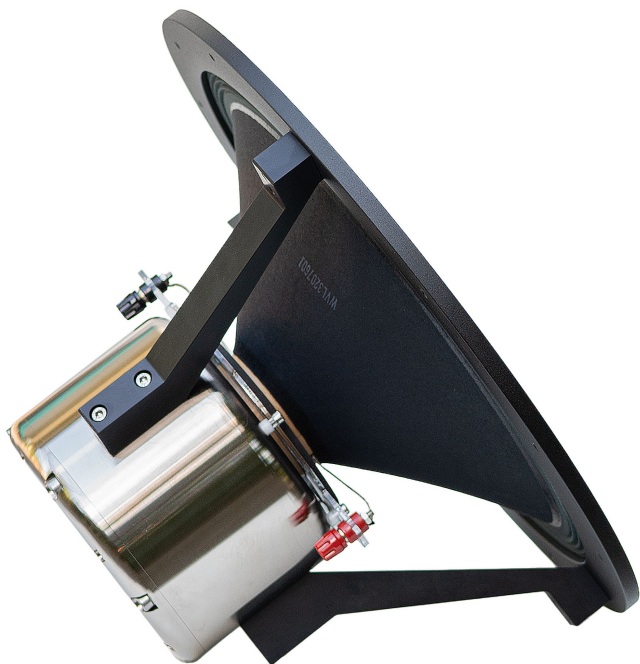
Field-Coil-Fullrange-Drive

Recommended frequency range 20 to 20000Hz

Power Capability about 50 watts

Field-Dissipation up to 30 watts

Compatible with Lowther UK bolt hole pattern



WVL AC-3276

Field-Coil-Bass-Midrange-Drive

Recommended frequency range 20 to 3000Hz

Power Capability about 150 watts

Field-Dissipation up to 30 watts

Outer Frame dimensions \varnothing 422mm



WVL AC-1650

Field-Coil-Midrange-Drive

Recommended frequency range 500 to 4000Hz

Power Capability about 50 watts

Field-Dissipation up to 30 watts

Compatible with AUDIO FRAME CHICAGO